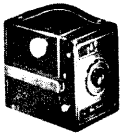


SEARS CAMERA SPECIFICATION CHART makes it easy to compare and select

1/4" SEARS, ROEBUCK AND CO.

	See Page	Nega-tive Size	Film Size	No. Prints	Color Film ⑦	Lens Opening	Shutter ⑧	Flash Unit ⑨	Flash Bulbs ⑩	Battery Type	View-finder ⑪	Coupled Rangefinder	Focuses from (in feet) ⑫	L.M.D. ⑬	Filter Series	Case ⑭
<b>NON-ADJUSTABLE CAMERAS</b>																
TOWER Box Cameras	4	2 1/4 x 3 1/4	120	8	Neg.	f:16	1/40, B	⑩	5-25	Pen ⑥	eye	no	8	19mm	V ⑮	E
Argus 75	5	2 1/4 x 2 1/4	620	12	Neg.	f:13	1/40, B v	3C6274M	SM-SF, 5-25	C	waist	no	7 1/2	28.5mm	V ⑮	E
Brownie Hawkeye	4	2 1/4 x 2 1/4	620	12	Neg.	f:15	1/40, B	3C6101M	5-25, SM-SF	C	waist	no	6	25mm	V ⑮	E
Baby Brownie	4	1 1/8 x 2 1/2	127	8	Neg.	f:12.8	1/40, B	none	none	eye	no	5	24mm	V ⑮	E	
Kodak Duaflex	5	2 1/4 x 2 1/4	620	12	Neg.	f:12.5	1/40, B	3C6393M	5-25, SM-SF	C	waist	no	5	28.5mm	V ⑮	E
Kodak Tourist	10	2 1/4 x 3 1/4	620 ①	8	Neg.	f:12.5	1/40, T, B	3C6382M	5-25, SM-SF	C	eye	no	8	28.5mm	V ⑮	E
Anso Rediflex	5	2 1/4 x 2 1/4	620	12	Neg.	f:11 ①	1/40, B	3C6122M	5-25, SM-SF	Pen ⑥	waist	no	6	29mm	V ⑮	E
Anso Readyflash	5	2 1/4 x 3 1/4	620	8	Neg.	f:12.8	1/40, B	3C6122M	5-25, SM-SF	Pen ⑥	eye	no	7	29.5mm	V ⑮	E
Anso Pioneer	5	2 1/2 x 4 1/4	616	8	Neg.	f:13	1/40, B	3C6122M	5-25, SM-SF	Pen ⑥	eye	no	8	35mm	V ⑮	E
Anso Flash Clipper	5	2 1/4 x 2 1/2	616	16	Neg.	f:11 ①	1/40, B	3C6111M	5-25, SM-SF	Pen ⑥	eye	no	6	23mm	V ⑮	E



<b>FOLDING CAMERAS</b>																
TOWER Folding Cameras	11	2 1/4 x 3 1/4	120, 620	8	Neg.	Crystar f:12.5	1/40, B	3C6252M	5-25	Pen ⑥	eye	no	⑮	31.5mm	V ⑮	H
Polaroid Camera	10	3 1/4 x 4 1/4	Polaroid	8	None	①	①	3C6338M	5-25, SM-SF	B	eye	no	3 1/2	31.5mm	V ⑮	H
Anso Viking	11	2 1/4 x 3 1/4	120	8	Both	Ag f:4.5; 6.3	1/25-1/200B, 1/25-1/200T, B	3C6389M	5-25, SM-SF	C	eye	no	3	37, 30mm	VI, V	H
Anso Speedex	11	2 1/4 x 2 1/4	120	12	Both	f:4.5 Ag or Ap	TB: 1/25-1/200 or 1-1/300 v	3C6389M	5-25, SM-SF	C	eye	no	3	30 mm	V	E
Kodak Tourist II	10	2 1/4 x 3 1/4	620	8	Both	An f:6.3	1/25-1/200 T, B	3C6382M	5-25, SM-SF	C	eye	no	3 1/2	32mm	VI	E
Kodak Tourist II	10	2 1/4 x 3 1/4	620 ①	8	Both	f:4.5 An or Ar	TB 1/10-1/200 or 1-1/800	3C6382M	5-25, SM-SF	C	eye	no	3 1/2	32mm	VI	E
Zeiss Ikon Ercona	11	2 1/4 x 3 1/4	120	8	Both	Navar f:4.5	1-1/250 B v	3C6140M	5-25, SM-SF	B	eye	no	5	40mm	VI	H
Welfax Camera	11	2 1/4 x 2 1/4	120	12	Both	Meritar f:3.5	1-1/250 B	3C6140M	5-25, SM-SF	B	eye	no	3	33mm	VI	E
Belfaca Camera	10	2 1/4 x 3 1/4	120	8	Both	Meritar f:4.5	1-1/250 B	3C6382M	5-25, SM-SF	C	e & w	no	5	37mm	VI	H

<b>REFLEX CAMERAS</b>																
TOWER Reflex	13	2 1/4 x 2 1/4	120	12	Both	f:3.5 To; Ni	B-1-1/200 or 1-1/500	3C9627	11-22, 40.0	B	e & w ⑮	no	3	36mm	VI	E
Ciroflex Models	13	2 1/4 x 2 1/4	120	12	Both	Wo f:3.5; f:3.2	T, B-1/10-1/200 or 1-1/400	3C9627	11-22, 40.0	B	e & w ⑮	no	3 1/2	⑮	VI	E
Rolleiford	13	2 1/4 x 2 1/4	120	12	Both	f:3.5 X; T	1-1/500 B v	3C9627	11-22, 40.0	B	e & w ⑮	no	2 1/2	28.5mm	V	E incl.
Rolleiflex	13	2 1/4 x 2 1/4	120	12	Both	f:3.5 X; Ts	1-1/500 B v	3C9627	11-22, 40.0	B	e & w ⑮	no	3 1/2	28.5mm	V	E incl.
Anso Reflex	13	2 1/4 x 2 1/4	120	12	Both	Wo f:3.5	1-1/400 B v	3C9627	11-22, 40.0	B	e & w ⑮	no	3 1/2	33mm	VI	E incl.
Super D Graflex	26	3 1/4 x 4 1/4	3 1/4 x 4 1/4 ①	①	Both	Ektar f:4.5 ①	FP1/20-1/1000T	①	6	D	waist ⑮	no	3	44.5mm	VII	⑮
Argus 40 (reflex type)	5	2 1/4 x 2 1/4	620	12	Both	Argus f:4.5	FP1/25-1/150B v	3C6274M	5-25, SM-SF	C	waist	no	3 1/2	30mm	V	E
Kodak Duaflex (reflex type)	5	2 1/4 x 2 1/4	620	12	Neg.	Kodak f:8	1/40 B v	3C6393M	5-25, SM-SF	C	waist	no	3 1/2	28.5mm	V	E

<b>35mm CAMERAS</b>																
TOWER 35	16	1 x 1 1/2	35mm	①	Trans.	Ni f:2; 1.4	FP 1-1/500 T, B v	①	6	B	eye	yes	1 1/2	42, 45mm	VI, VII	E incl.
Argus C3	18	1 x 1 1/2	35mm	①	Trans.	Ci f:3.5	1/10-1/300B	included	0-11, 22-40	C	eye	yes	3	⑮	V	E
Argus C4	18	1 x 1 1/2	35mm	①	Trans.	Ci f:2.8	1/10-1/200 B v	3C6142M	5-25, SM-SF	C	eye	yes	3	33mm	VI	E
Kodak Pony 135	19	1 x 1 1/2	35mm	①	Trans.	An f:4.5	1/25-1/200 B	3C6382M	5-25, SM-SF	C	eye	no	2 1/2	28.5mm	V	E
Kodak Pony 828	19	1 1/8 x 1 9/16	828	8	Both	An f:4.5	1/25-1/200 B	3C6382M	5-25, SM-SF	C	eye	no	2 1/2	28.5mm	V	E
Kodak Signet	19	1 x 1 1/2	35mm	①	Trans.	Ek f:3.5	1/25-1/300 B v	3C9626	5-25, SM-SF	B	eye	yes	2	28.5mm	V	E
Kine Exakta VX	19	1 x 1 1/2	35mm	①	Trans.	Ts f:2.8; Bi f:2	FP12-1/1000T, B v	3C9626	6	B	e & w ⑮	no	1 1/4	⑮	VI	E
Exa 35mm	19	1 x 1 1/2	35mm	①	Trans.	Ts f:3.5; M f:2.9	FP1/25-1/150B v	3C9626	6	B	e & w ⑮	no	2 1/2	37mm	VI	E
Ciro 35mm	19	1 x 1 1/2	35mm	①	Trans.	Wo f:3.5; 4.5	T, B 1/10-1/200; 1/25-1/150	3C6219M	5-25, SM-SF	C	eye	yes	3	24mm	V	E
Bolsey B2	18	1 x 1 1/2	35mm	①	Trans.	Wo f:3.2	1/10-1/200T, B v	3C6191MF	5-25, SM-SF	C	eye	yes	2	24mm	V	E
Bolsey C	18	1 x 1 1/2	35mm	①	Trans.	Wo f:3.2	1/10-1/200T, B v	3C6191MF	5-25, SM-SF	C	e & w ⑮	yes	2	24mm	V	E
Karomat	19	1 x 1 1/2	35mm	①	Trans.	SX f:2	1-1/500 T, B v	3C9626	5-25, SM-SF	B	eye	yes	3	33mm	VI	E

<b>STEREO CAMERAS</b>																
Stereo Realist	22	22x24mm	35mm	16 ①	Trans.	Twin f:3.5	1-1/150 T, B	3C6372M	5-25, SM-SF	Pen ⑥	eye	yes	2 1/2	.....	⑮	E
Iloco II Stereo	22	23x24mm	35mm	16 ①	Trans.	Twin f:3.5	1-1/300 B v	3C6140M	5-25, SM-SF	B	eye	no	3	.....	①	E
Viewmaster Personal	22	12x13mm	35mm	37 ①	Trans.	Twin f:3.5	1/10-1/100B v	3C6438M	5-25, SM-SF	Pen ⑥	eye	no	7	.....	V ⑮	E

<b>PRESS CAMERAS</b>																
TOWER Press 2 1/4 x 3 1/4	24	2 1/4 x 3 1/4	2 1/4 x 3 1/4 ①	①	Both	Ek f:4.5 ①	1-1/800 T, B	3C6176M	all	B	eye ⑮	yes	⑮	⑮	V	⑮
TOWER Press 4x5	24	4x5	4x5 ①	①	Both	Ek f:4.7 ①	1-1/400 T, B	3C6176M	all	B	eye ⑮	yes	⑮	38mm	VI	⑮
Speed Graphic 2 1/4 x 3 1/4	①	2 1/4 x 3 1/4	2 1/4 x 3 1/4 ①	①	Both	E f:4.5; Op f:4.5 ①	①	①	①	D	eye ⑮	yes	⑮	31.5mm ①	VI	⑮
Speed Graphic 3 1/4 x 4 1/4	①	3 1/4 x 4 1/4	3 1/4 x 4 1/4 ①	①	Both	E f:4.7; Op f:4.7 ①	1-1/400T, B ①	①	①	D	eye ⑮	yes	⑮	38mm	VI	⑮
Speed Graphic 4x5	26	4x5	4x5 ①	①	Both	Ektar f:4.7 ①	F.P1/30-1/1000; 1-1/400 T, B	①	6; 5, SM	D	eye ⑮	yes	⑮	38mm	VI	⑮
Crown Graphic 2 1/4 x 3 1/4	26	2 1/4 x 3 1/4	2 1/4 x 3 1/4 ①	①	Both	Optar f:4.5 ①	1-1/400 T, B	①	0-11, 22-40	D	eye ⑮	yes	⑮	31.5mm ①	VI	⑮
Crown Graphic 4x5	26	4x5	4x5 ①	①	Both	Optar f:4.7 ①	1-1/400T, B	①	0-11, 22-40	D	eye ⑮	yes	⑮	31.5mm	VI	⑮
Century Graphic 2 1/4 x 3 1/4	26	2 1/4 x 3 1/4	2 1/4 x 3 1/4 ①	①	Both	Grf f:4.5 ①	1/10-1/200T, B	①	①	D	eye ⑮	no	⑮	31.5mm	VI	⑮

<b>VIEW CAMERA</b>																
Graphic 4x5 View	26	4x5	4x5 ①	①	Both	Ektar 152mm f:4.5 ①	1-1/200 T, B	①	①	D	⑮	no	⑮	44.5mm	VII	⑮

- KEYS**—For circled numbers and abbreviations
- ①—Write Sears Personal Service Department
  - ②—4 film sizes with adapter. See page 10.
  - ③—Takes sheet; pack film; roll film holder.
  - ④—35mm film comes in 20 or 36-exp. rolls.
  - ⑤—1 pair per view. See page 22.
  - ⑥—12 films per film pack; 10, 24, 25 films per package of sheet film.
  - ⑦—Neg. means Kodacolor prints. Trans. means color transparencies.
  - ⑧—Lens has built-in yellow filter.
  - ⑨—8 numbered exposures, speeds to match
  - ⑩—Or TOWER Basic Model. See page 25.
  - ⑪—Focal lengths: f:4.5 E or Op 101mm; f:4.7 E 127mm; f:4.7 Op 135mm; f:4.5 Tt 103mm.
  - ⑫—Non-adj. models have fixed shutters.
  - ⑬—1-1/800 sec with Time and Bulb.
  - ⑭—FP—1/20-1/100 with Time and Bulb.
  - ⑮—All are flash synchronized except Baby Brownie; TOWER "120", "50", "non synchro 35." Use flash units below.
  - ⑯—Flash unit included with "49" and "97."
  - ⑰—Synchronized model uses 3C6140M Flash Unit; non-synch. uses 3C6437M.
  - ⑱—See page 25. Bulb base depends on unit.
  - ⑲—No's. 5, 25, SM, SF and 6 are bayonet; 0, 11, 22 and 44 are screw base bulbs.
  - ⑳—Penlight battery.
  - ㉑—Eye- or waist-level or both (e & w).
  - ㉒—Ground glass focusing.
  - ㉓—All models under "Non-Adjustable" heading are fixed in focus. All others focus from minimum footage given below to infinity.
  - ㉔—TOWER "50" in focus from 8 ft. to infinity. TOWER "51" in focus from 6 ft. to infinity. Lens mount diameter for each is 30mm.
  - ㉕—Bellows permits very close focusing.
  - ㉖—Lens mount diameters in millimeters.
  - ㉗—Model F, 33.6mm. Others, 31.5mm.
  - ㉘—Takes No. 18 retaining ring.
  - ㉙—Model f:2.8, 31.5mm. Model f:2, 42mm.
  - ㉚—Ektar lenses fitted for Ser. V filters.
  - ㉛—Use large TOWER Stick-on Filters. Baby Brownie and Flash Clipper use small size.
  - ㉜—Polaroid Camera Filters on page 10.
  - ㉝—See special filters page 22.
  - ㉞—"E" for Eveready, "H" for Holster cases.
  - ㉟—See page 27—cases for larger cameras.
  - ㊱—Sold separately. See page 26.
  - ㊲—Double exposure prevention.
- Ag: Agfa Agnar Ek: E. Ektar SX: Schneider  
 An: Anaston FP: Focal T: Time  
 Ap: Apotar Plane To: TOWER  
 Ar: Anastar Grf: Graftar Ts: Tessar  
 B: Bulb M: Meritar Tt: Trioptar  
 Bi: Biotar Ni: Nikkor W: Wollensak  
 Ci: Cintar Op: Optar X: Xenar

Carrying Cases available for every camera we sell



**Eveready Cases**—Ideal for 35mm and reflex cameras... camera attaches right to case. Front drops down for taking pictures.

**Holster Cases**—Fold-  
**Movie Camera Cases**—ing cameras slip in. Keeps camera, accessories ready to use.

